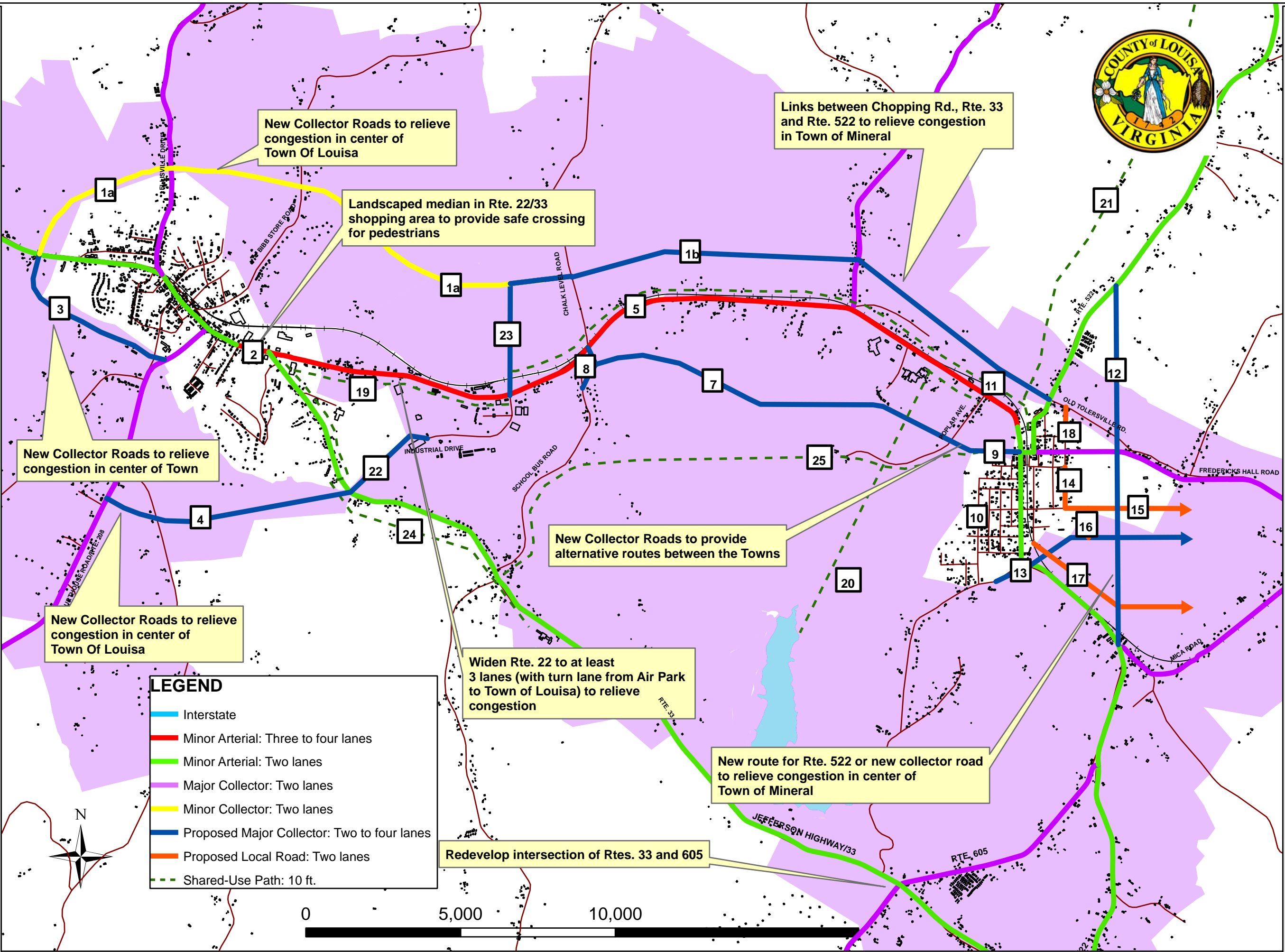


# LOUISA/MINERAL AREA

# 2010 TRANSPORTATION PLAN



New Collector Roads to relieve congestion in center of Town Of Louisa

Landscaped median in Rte. 22/33 shopping area to provide safe crossing for pedestrians

Links between Chopping Rd., Rte. 33 and Rte. 522 to relieve congestion in Town of Mineral

New Collector Roads to relieve congestion in center of Town

New Collector Roads to provide alternative routes between the Towns

New Collector Roads to relieve congestion in center of Town Of Louisa

Widen Rte. 22 to at least 3 lanes (with turn lane from Air Park to Town of Louisa) to relieve congestion

New route for Rte. 522 or new collector road to relieve congestion in center of Town of Mineral

Redevelop intersection of Rtes. 33 and 605

**LEGEND**

- Interstate
- Minor Arterial: Three to four lanes
- Minor Arterial: Two lanes
- Major Collector: Two lanes
- Minor Collector: Two lanes
- Proposed Major Collector: Two to four lanes
- Proposed Local Road: Two lanes
- Shared-Use Path: 10 ft.

